

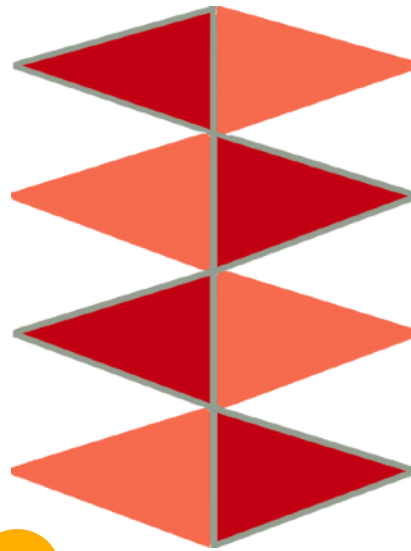


# TRIANGLES

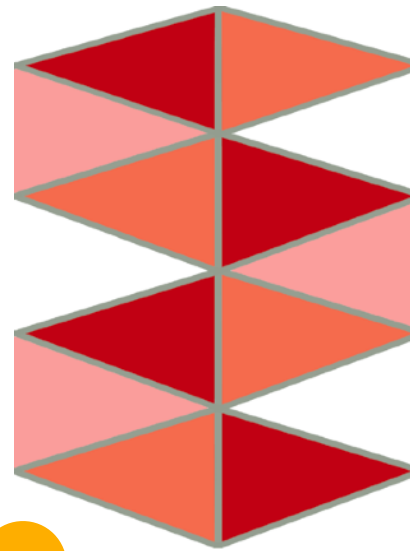
*instructions*



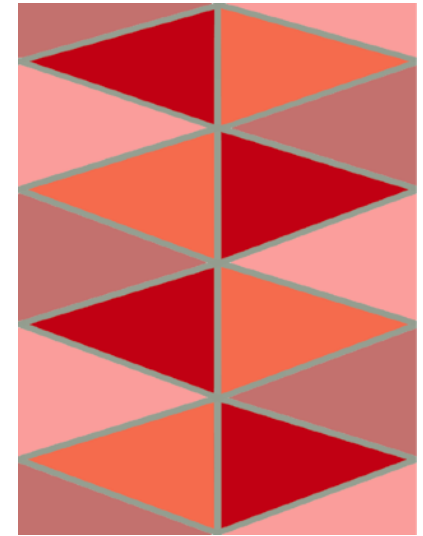
1



2



3



4

To complete this kit, I used setting C of the adjustable punch needle. You can play around with the settings to see what you like best.

(1) Thread your punch needle with the orange yarn and fill out the triangles as shown by making an outline and then moving inwards.

(2) Now use the wine red and repeat.

(3) Continue with baby pink. Remember to snip the yarn at the end of filling out each triangle before moving to the next

(4) Lastly, use the darker pink and fill out the remaining triangles.

- turn the piece over and take a look at the piece as a whole. Snip ends and beginnings of your stitches. Are there any stitches that are much longer than the rest? If so, snip them just like you would when ending a stitch and mix them in with surrounding stitches so they're not as obvious.

- straighten out the outline by moving stitches around. Detailed video is [here](#).

**step back and enjoy the awesomeness you just created and be proud of yourself!**

I cannot wait to start getting pictures from all of you to see your beautiful work. Don't forget, I'm only a message away should you have questions ;)

Don't forget to tag me on social media for a chance to be featured! @myraandjean #myraandjean

